



City of Ypsilanti

Senior Center News

Ypsilanti Senior/Community Center (734) 483-5014

November 2012

Regular Daily Schedule

Monday

9:30 Exercise w/Mark
10:30 Line Dancing
11:45 Lunch
12:30 Euchre

Tuesday

10:30 Art
11:45 Lunch

Wednesday

9:00 Exercise w/ Mark
10:45 Gentle Fitness
11:45 Lunch
12:30 Bingo
12:30 Art

Thursday

11:45 Lunch
1:00 – 2:30 Yoga

Friday

9:30 Exercise w/Mark
10:45 Gentle Fitness
10am -2pm Massage
(by appointment)
1:00 - 2:30 Yoga

Saturday

10:00-noon – Quilting



Potluck Lunch

November 13, 2012, 11:45

Join us to celebrate the Veterans among us. Bring in your memorabilia from the time you or your loved ones were in the service. We will put together a display table. During and after the potluck there will be time to share your stories. The center will provide the main dish of chicken wings. Sign up at the center to bring side dishes, dessert, or give a donation for the main course.

Out to Eat Brunch

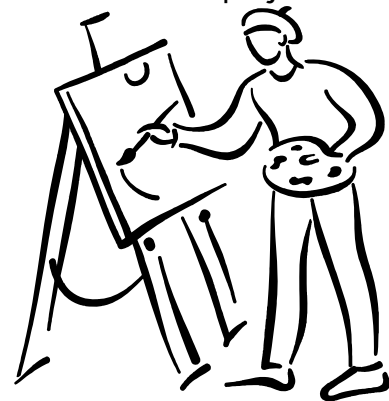
November 16, 2012, 5:00

Meet the bunch at 5pm at Hibachi Grill, 4735 Washtenaw Ave, Ann Arbor, (734) 528-9999. Sign up at the center and be sure to arrange your own transportation.

November Art

Tuesday 10:30 – 11:30 am

Starting on November 12 we will work with polymer clay, and practice several techniques that can be used to make beads, buttons, or a number of other projects.



Wednesday 12:30 – 2pm

We will continue our acrylic painting throughout the month and "Paint like the Masters." Using photos of masterpieces, we can learn techniques of past artists.

**Craft Circus – Sat., Nov. 3,
2012, 11am – 4pm**

More than 25 local artists will be set up at the center to sell their artwork. It is an ideal time to start your Holiday shopping. Many of the artists also donate a piece of art to be raffled. Tickets can be purchased during the show. Proceeds go to the senior center.

From the Director

It is November and we are faced with important decisions to make. Don't forget to vote. If that absentee ballot is still sitting on your desk, get it now, fill it out and mail it in. Everyone's vote is important.

The Holiday Craft shows are starting. Our Craft Circus is November 3. Stop by and start your holiday shopping. I'll be there with more scarves and baby onesies. Remember there will also be a children's craft table.

The jewelry sale will be Saturday December 1. Bring in your used jewelry so we can have another successful sale.

--Monica Prince



Get your blood pressure checked. Jessica Lewis from Heartland will be here to take your blood pressure, Wednesday, November 28 from 10:15-11:30. Take advantage of this free service.

The foot nurse will be at the center on Thursday, November 8, from 10-2. Please call (734) 741-8586 to make an appointment.

Cecil Bridges is available for the Norwegian Massage. Call the center to arrange an appointment. The fees are as follows: \$11 for 15 minutes, \$22 for 30 minutes, and \$44 for one hour.

November Birthdays



Alexander	Munro	11/1
Sally	Lunn	11/6
Carmen	Graham	11/08
Elizabeth	Scheffler	11/10
Claudia	Robinson	11/12
Denny	Burr	11/13
Dorothy	Whigham	11/14
Nancy	Fox	11/16
William	Beach	11/16
Gwendolyn	Bowens	11/16
Mary	Martin	11/17
Phyllis	Shobey	11/18
Marjorie	Watkins	11/23
Alice	Gilbert	11/24
Cheryl	Lawrence	11/24
DeLois	Wilson	11/25
Rudy J.	Burns	11/28
Carol	Coppersmith	11/30

The center will be closed

Tues. Nov. 6 for Elections

Mon. Nov. 12 for Veterans Day

Nov. 22 and 23 for Thanksgiving.

Snow Days

The center will be closed on days that the Ypsilanti Public Schools are closed due to inclement weather. Listen to the radio or watch TV for the announcement.



Friends' Board of the Ypsilanti Senior Center

After the city of Ypsilanti eliminated the recreation department in 2003, a dedicated group of volunteers has worked diligently with our director, Monica Prince, to raise almost all of the funds needed to run the Center each year. Volunteers also support our fundraisers (corn roast, jewelry sale, etc.) publish the newsletter, manage the website, and produce the brochures and flyers and mailings, along with many other tasks.

Our volunteers come from many service organizations (Circle K, the Ypsilanti Jaycees, the Ypsilanti Kiwanis, EMU and WCC students and more) and from the neighborhood and the community.

We appreciate the work of all of our volunteers – we couldn't do it without you!

Current Friends' Board members:

Rebecca Dunkle, Ypsilanti, MI – Board member Normal Park Neighborhood Association, Ann Arbor Book Festival; employed University of Michigan.

Marcia Bailey, Fenton, MI – community volunteer, employed by University of Michigan Library

Marilyn Funk, Ypsilanti MI – Volunteer Ypsilanti Thrift Shop, retired from Washtenaw Parks Dept.

Tom Hubbard, Ypsilanti MI – community volunteer, employed by University of Michigan Library

Jean Teifer, Ann Arbor, MI – Board member Ann Arbor Symphony Orchestra, Peer Counselor Kite Network, Committee member St. Joe's Holiday Ball; retired from Arbor Hospice



Ypsilanti Area Jaycees Senior Dinner

**Saturday, November 10, 2012,
5:30-8:30 p.m.**

Please come out and join us for our annual Senior Dinner presented by the Ypsilanti Area Jaycees. Each year the Jaycees provide dinner for the members of the Ypsilanti Senior Community Center and always prepares a delicious Thanksgiving meal. This year will be no different. A fully homemade dinner is being planned as we speak. Our cook Randy Hall is determined to make this the best Thanksgiving meal you have ever had! The Jaycees cannot wait to see all of you!

Kristen Mishler
74th President
Ypsilanti Area Jaycees

City of Ypsilanti
Senior/Community Center
in Recreation Park

Phone: 483-5014
Fax : 480-0380
seniorcenter@umich.edu
web : ypsiseniorcenter.org

*Home of the
Ypsilanti Senior Center*

*Our Mission:
To provide opportunity for
positive, safe, structured
recreational, educational
and networking activities
targeted towards Seniors
and the community that
supports them*

MEET THE STAFF:

Monica Prince – Senior Center Director
DeLois Wilson – Receptionist
Deborah Finley – Senior Aide

SENIOR CENTER HOURS

Monday and Friday	9:00 am – 2:00 pm
Tuesday - Thursday	10:00 am – 2:00 pm
Saturday (quilting)	10:00 am – 12:00 noon



**Nutritious, delicious hot meals served weekdays at noon.
Suggested cost share for seniors age 60 and up: \$3.00
Call to reserve lunch at least one day in advance.**

SENIOR/COMMUNITY CENTER
1015 N CONGRESS
YPSILANTI, MI 48197
www.ypsiseniorcenter.org

